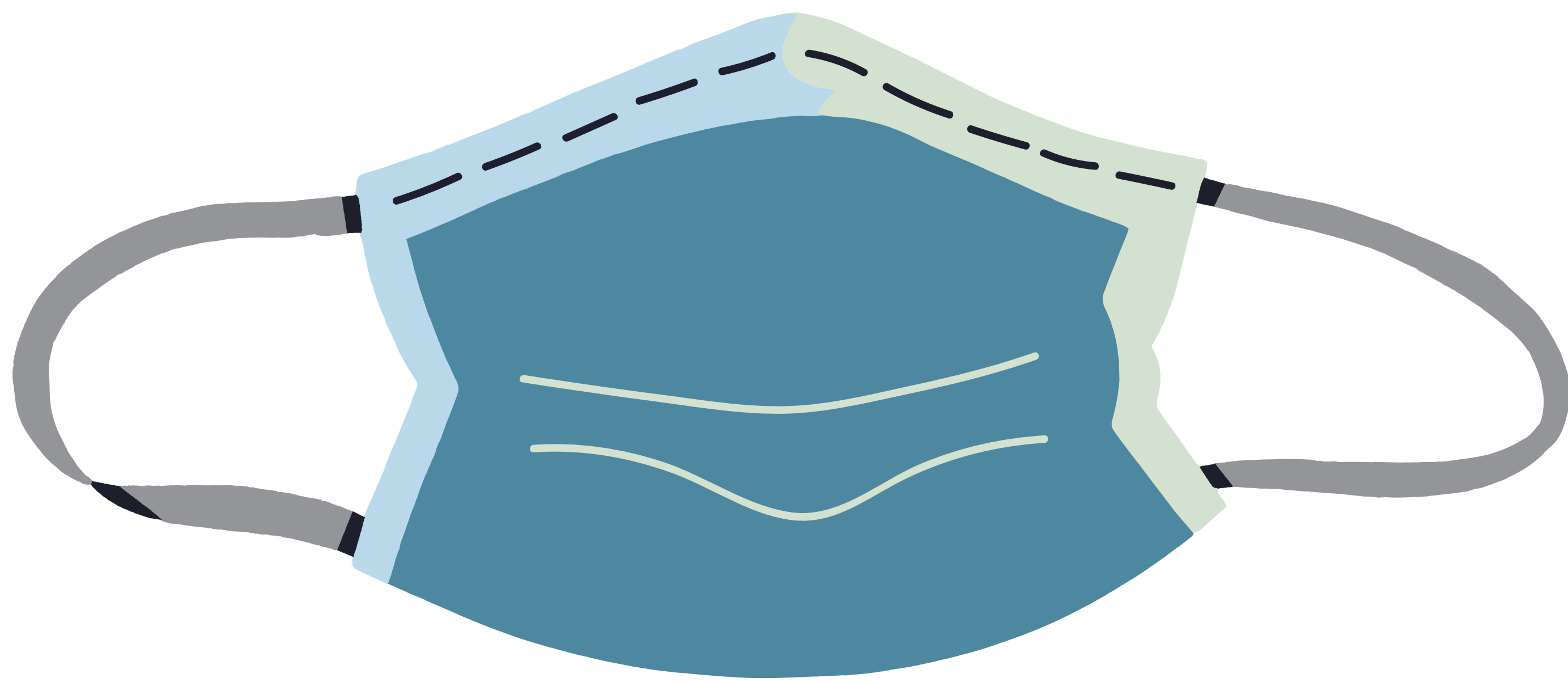


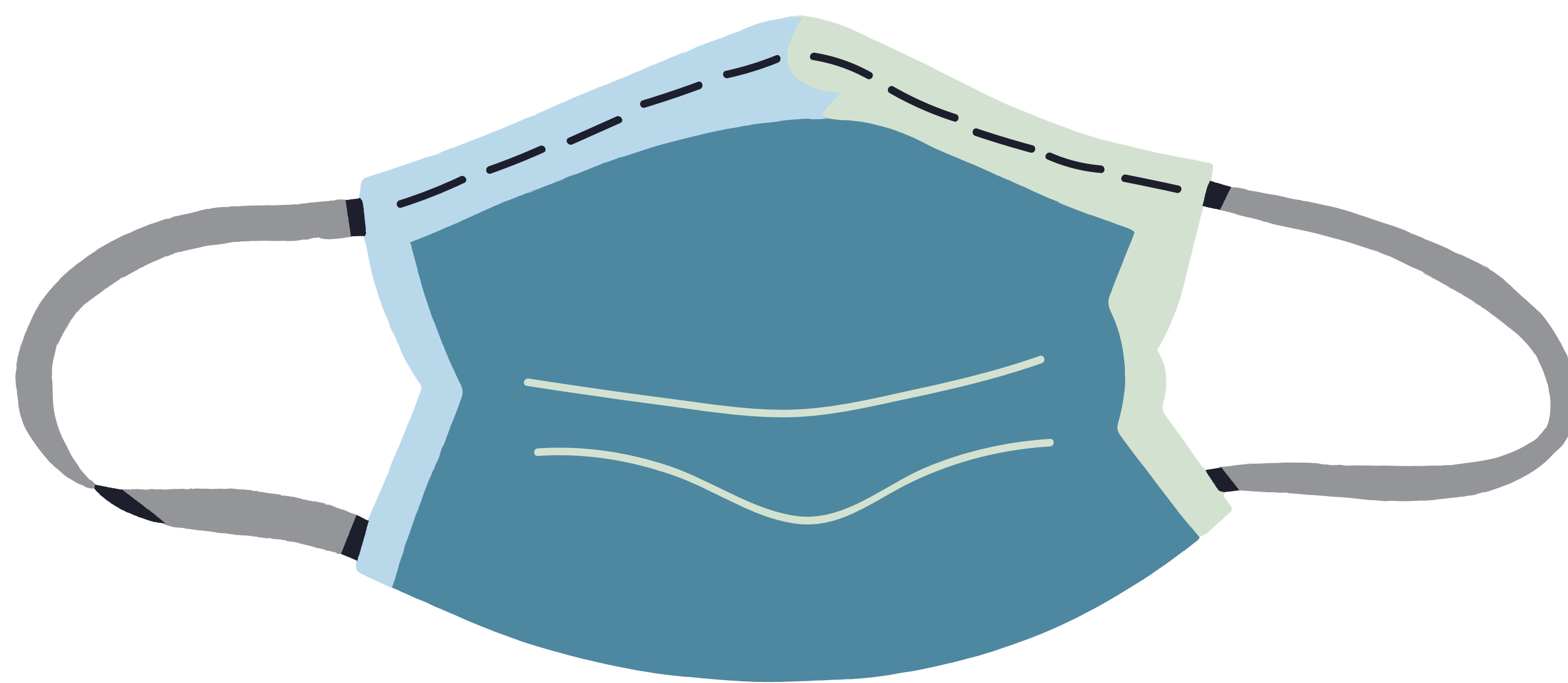
**PER
TOWN OF BLUFFTON
EMERGENCY ORDINANCE 2020-10**



**OUR
EMPLOYEES
WEAR FACE COVERINGS**

bluffton
HEART OF THE LOWCOUNTRY™

**PER
TOWN OF BLUFFTON
EMERGENCY ORDINANCE 2020-10**

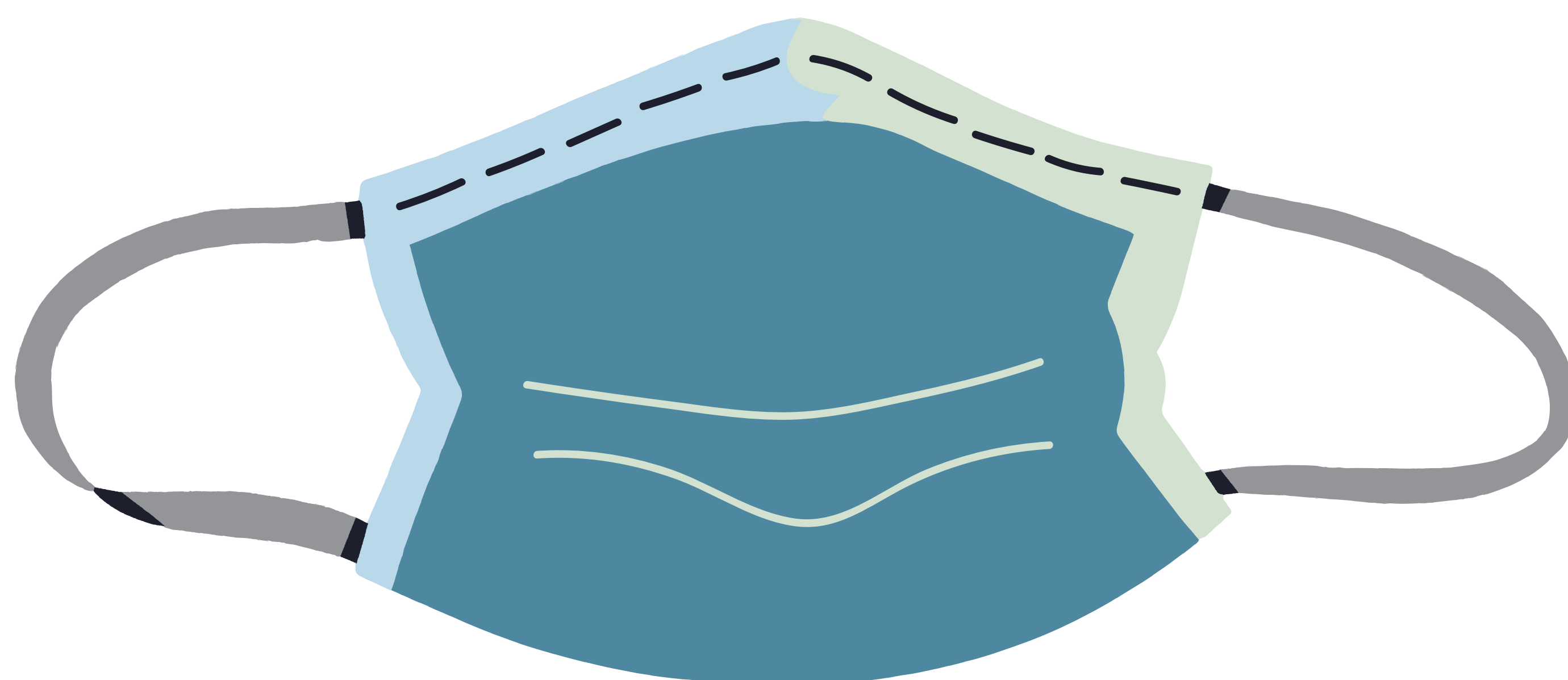


**FACE COVERING
REQUIRED**

**ALL PERSONS ENTERING ANY
BUILDING OPEN TO THE PUBLIC IN THE
TOWN MUST WEAR A FACE COVERING
WHILE INSIDE THE BUILDING.**

bluffton
HEART OF THE LOWCOUNTRY™

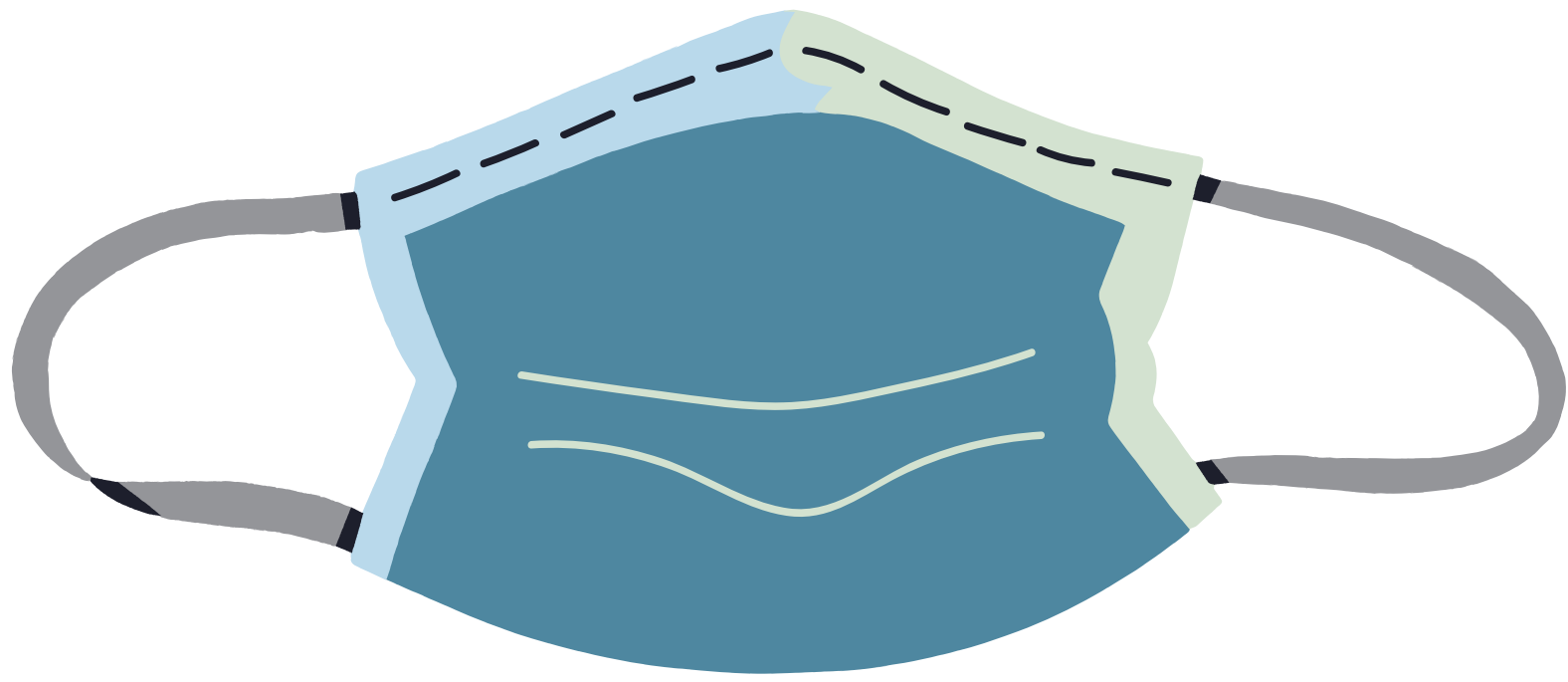
**PER
TOWN OF BLUFFTON
EMERGENCY ORDINANCE 2020-10**



**FACE COVERING
REQUIRED**

bluffton
HEART OF THE LOWCOUNTRY™

PER TOWN OF BLUFFTON EMERGENCY ORDINANCE 2020-10



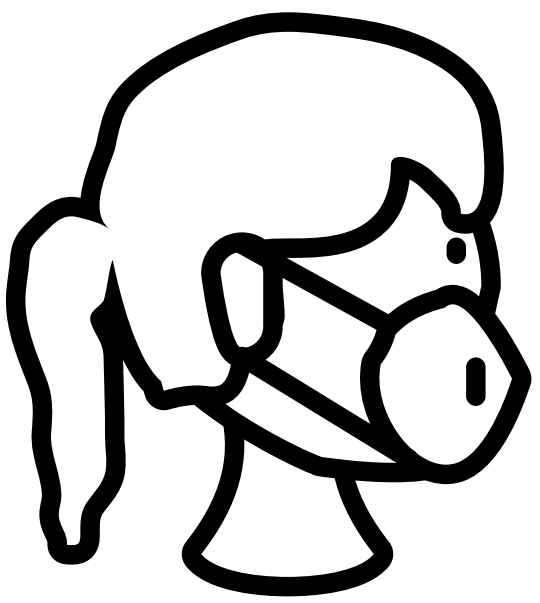
FACE COVERING REQUIRED



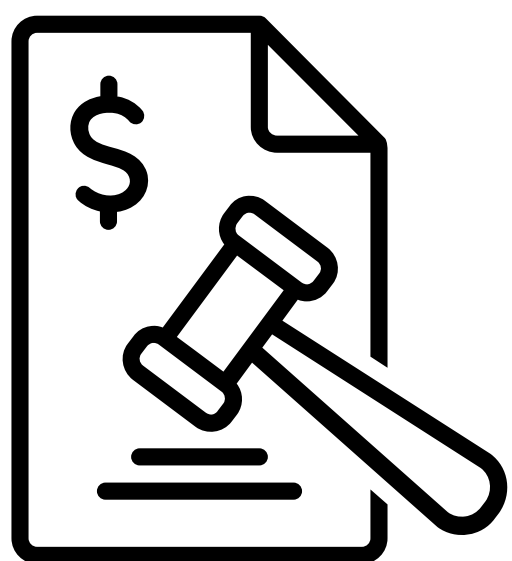
ALL PERSONS ENTERING ANY BUILDING OPEN TO THE PUBLIC MUST WEAR A FACE COVERING WHILE INSIDE.



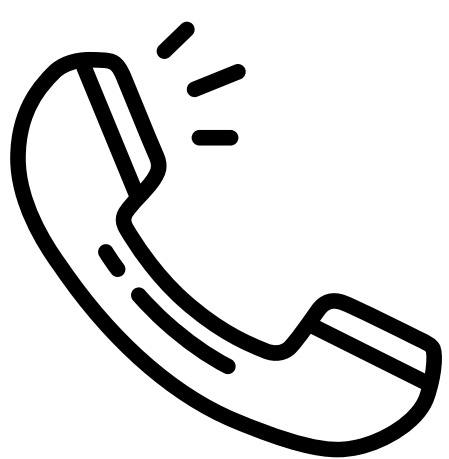
EMPLOYEES OF RESTAURANTS, RETAIL ESTABLISHMENTS OF EVERY DESCRIPTION, SALONS, GROCERY STORES AND PHARMACIES MUST WEAR FACE COVERINGS WHEN IN ANY AREA WHERE THE GENERAL PUBLIC IS ALLOWED.



EXEMPT: ANY PERSON UNDER 8-YEARS OLD, THOSE UNABLE TO SAFELY WEAR A FACE COVERING DUE TO AGE OR UNDERLYING HEALTH CONDITION OR UNABLE TO REMOVE THE FACE COVERING WITHOUT THE ASSISTANCE OF OTHERS.



**PENALTY FOR NON-COMPLIANCE:
CIVIL INFRACTION WITH \$50 FINE**



**FOR MORE INFORMATION OR TO REPORT A VIOLATION
CALL: 843-524-2777**

bluffton
HEART OF THE LOWCOUNTRY™